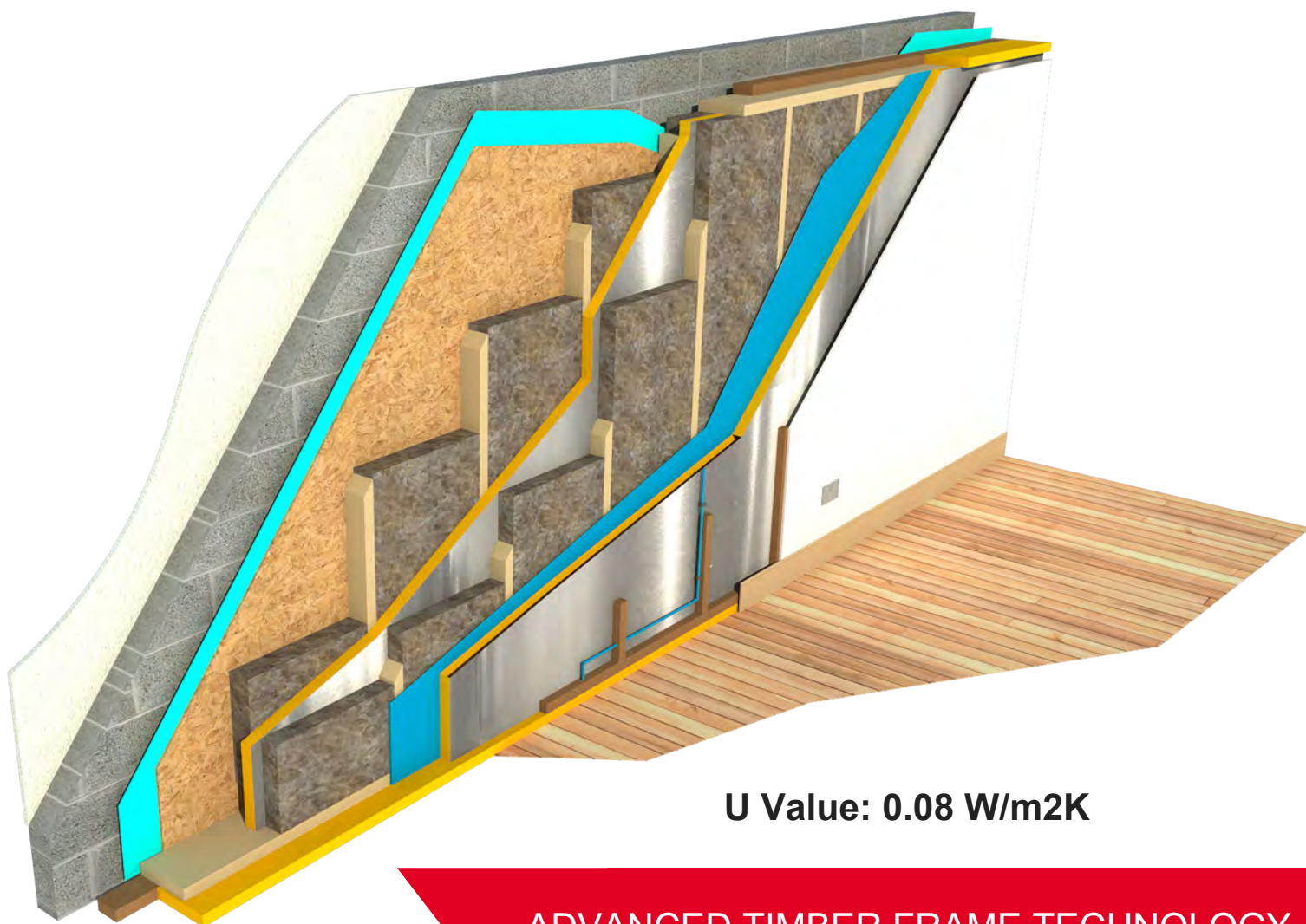


ALL UNDER **ONE** ROOF



U Value: 0.08 W/m<sup>2</sup>K

ADVANCED TIMBER FRAME TECHNOLOGY

## ENERGY SAVING TIMBER FRAME WALL SYSTEMS FOR YOUR FUTURE

Within the industry **Therm-u-wall** by **ACJ Group** is one of the most efficient wall systems in the timber frame market.

**Therm-u-wall** is the ideal wall system for gaining maximum performance and can also be used in Passive House projects.

Using the **Therm-u-wall** makes your house less reliant on renewables and your heating bills will be reduced. Why pay for products that will go out of date, need maintained and eventually replaced when you can invest in the most important part of all new builds, the wall construction. Call **ACJ Group** or email to find out how **Therm-u-wall** can benefit you.

**TIMBER FRAME KIT HOMES BY ACJ GROUP**

[www.acj-group.co.uk](http://www.acj-group.co.uk)

## ALL UNDER ONE ROOF

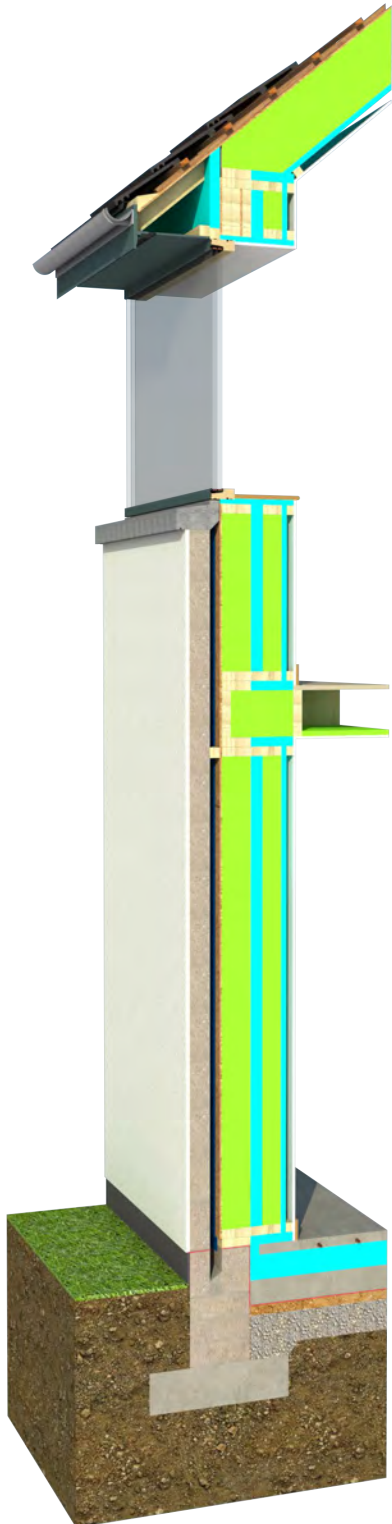
### Therm-u-wall Performance

- **U-Value W/m<sup>2</sup>k (with block & render finish)**  
From - 0.11 W/m<sup>2</sup>k to 0.08 W/m<sup>2</sup>k
- **Timber Fraction (Structure vs Insulation)**  
Timber - 10.95%  
Insulation - 89.5%
- **Timber cold/thermal bridge transference**  
Bridging - 3.75%

### Therm-u-wall Specification

- **Breather Membrane**  
Reflective
- **Panel Sheathing**  
OSB
- **Timber Frame Structure**  
C16 Studs + C24 Top & Bottom Rails
- **Insulation Within Structure - 3 Layers**  
Earth Wool + PUR Board + Earth Wool
- **Vapour Control Layer**  
Reflective
- **Internal Insulation - 1 Layer**  
PUR Board
- **Internal Service Zone**  
35mm
- **Internal Wall Finish**  
Plasterboard

Performance is based on a 2.4m x 2.4m panel size



**CLOSED PANEL CONSTRUCTION**