



## YOUR COMPLETE DESIGN & BUILD SOLUTION

Whether you're building your own home, constructing a housing estate or simply adding a garden space,

**ACJ Group** has the solution you need, all under one roof.

Our team has the skills and experience to plan, design, manage and deliver your project on time and within budget.

- ◆ Timber frame kit homes, extensions and garden spaces
- ◆ Bespoke, customised and off-the-shelf designs
- ◆ In-house architectural services design and develop to your specifications
- ◆ Full construction and installation service
- ◆ Specialists in energy-efficient building, including passive house design
- ◆ Planning advice and plots for sale
- ◆ Closed panel frames supplied direct
- ◆ All kits, frames and closed panels manufactured in Elgin



**SPECIALISTS IN TIMBER FRAME CONSTRUCTION**



### FROM CONCEPTION TO CONSTRUCTION

When you work with **ACJ Group** for your build, you're in safe hands. From advising with planning to painting the skirting, we're with you every step of the way.

Our in-house architectural services team ensures all your structural designs for site, production and construction are created in conjunction with the drawings used in warrant applications. Accurate plans cut out delays and save you time and money.

We precision model every project on the latest 3D computer systems, eliminating waste and errors upfront, enhancing efficient production and construction, and allowing you to see an accurate view of your home, so you can make informed decisions about your build, with no surprises.

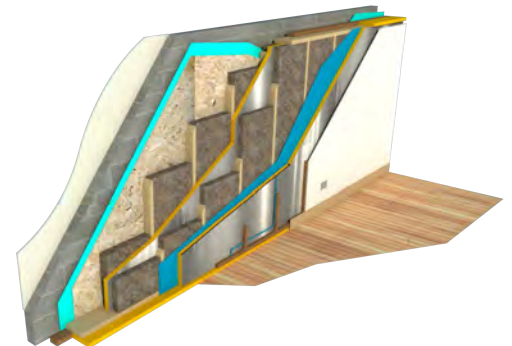


### ENERGY EFFICIENT BY DESIGN

Energy efficiency is key when designing a modern home, and we'll help you make the right choice of materials and renewable technologies for your property. Not only can we seamlessly integrate those solutions into your build, we have the skills in-house to install and maintain them.

We specialise in closed panel construction and are industry leaders in energy-efficient building, including passive house construction using our own, unique Therm-u-wall system.

All our timber frames and closed panels are designed and manufactured in our Elgin premises, providing a cost-effective and flexible service.



## SPECIALISTS IN TIMBER FRAME CONSTRUCTION

CALL NOW: 01343 559327

## YOUR COMPLETE DESIGN & BUILD SOLUTION



### TIMBER FRAME KIT HOMES

Creating your dream home is simpler than you think.

Selecting an **ACJ Group** timber frame kit home guarantees you a complete, cost-effective and energy-efficient build, assembled on site in a fraction of the time of traditional masonry construction.

We offer a wide range of standard designs, each of which can be customised to your own requirements. Our in-house design team also creates bespoke kit home packages, developed to your own specifications, delivered to site ready to assemble. Call us today to find out more about the advantages of a timber frame kit home.



### PODS AND GARDEN SPACES

Installing a garden pod creates additional living space for you to work, entertain or just relax.

**ACJ Group** produces stunning, contemporary outdoor rooms so you can enjoy your garden all year round.

### DESIGN CONCEPT SERVICE

**ACJ Group** offer a unique and cost effective pre planning design concept service.

We will sit down with you or talk to you over the phone or via email finding out the requirements and budget on what it is you are looking to achieve. We will design you a house plan and produce a 3D model to suit your design without any other commitment thereafter. During this service we will also advise you on the renewables for the house, the timber frame wall system and build costs, helping you make informed decisions at the beginning.

## SPECIALISTS IN TIMBER FRAME CONSTRUCTION

## ALL UNDER ONE ROOF



## PRICE COMPARISON

If you've been researching your options, and have a price from a competitor, you may be surprised to learn quite how much you can get from **ACJ Group**, in comparison with other home builders and timber frame kit suppliers.

We don't cut corners and we won't compromise our quality or our professional reputation for the sake of a quick sale, but we will happily review any quotation that you may have received from an alternative supplier and offer a like for like comparison.

Show us the spec that you've been given and we'll endeavour to create a like for like quote, allowing you to make an informed decision about the right design, timber frame system and build company to engage for your project.

## CONTACT US

TEL: 01343 559327 or 01343 559484

EMAIL: [info@acj-group.co.uk](mailto:info@acj-group.co.uk)

ADDRESS:  
5 Moycroft Industrial  
Estate Elgin IV30 1XZ

### OPENING HOURS:

Monday	8am – 5pm
Tuesday	8am – 5pm
Wednesday	8am – 5pm
Thursday	8am – 5pm
Friday	8am – 4pm
Saturday	Open by appointment
Sunday	Open by appointment



FULL DETAILS ON ALL OUR PRODUCTS AND SERVICES CAN BE FOUND  
ON OUR WEBSITE

[www.acj-group.co.uk](http://www.acj-group.co.uk)